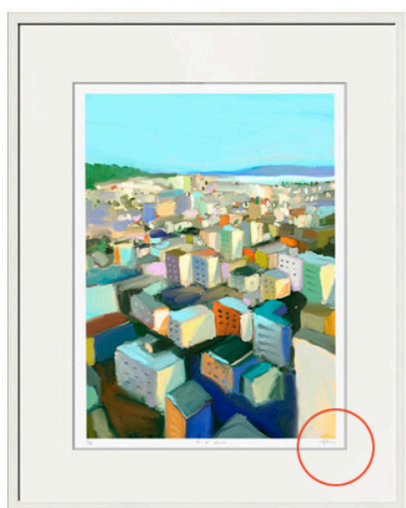


## A Few Things to Keep in Mind When Taking Your Print to the Framer

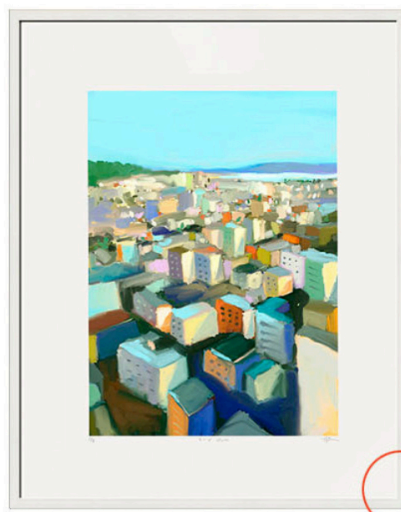
- Give framer final trim dimensions (on product page)
- Consider your environment: Do you have furniture you want to match? Wood, chrome? Modern? Traditional?
- Do you want to use a mat? I recommend a bright white mat for my prints. Lately people have been opting for "no mat" meaning that framer will frame around 3" white border that is included around every print.
- Still have questions? Email me [here](#) for framing questions.

Framing options: White, Black, Silver, Wood, Mat or No-mat



White (with white mat)

Ask framer for white mat that allows room for title and hand-signature of prints

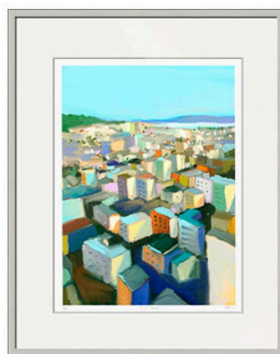


White (with white mat)

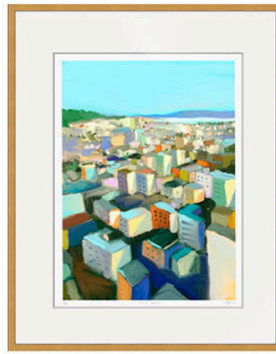
Ask framer to frame around white border that comes with every print



Black (with white mat)



Silver (with white mat)



Wood (with white mat)